



REMOTE SENSING

Mining

Oil & Gas

Civil engineering

Environment

Agriculture

Portfolio of Remote Sensing services

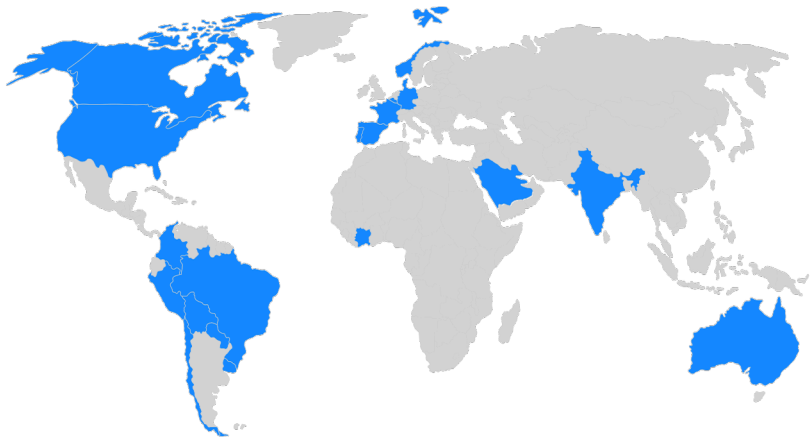
Who we are

We are an engineering company with more than 10 years of experience, specialized in the development of comprehensive technological solutions based on three areas of knowledge:

Robotics









Sensing

Analytics



Our drones operate
Currently in more than 20 countries

What we offer

01 Drones			Hercules X4 Hercules X8	Atlas X4 Atlas X8	Drakon 4000
02 Instruments			LiDAR ISR	Magnetómetro VLF	Hiperespectral Gamma Ray
03 Remote Sensing			Mining Oil & Gas	Civil engineering Environment	Agriculture
04 Projects			Tailor-made projects with a focus on innovation		



The intelligence behind technology

Just a few decades ago, capturing information involved weeks of manual field work and large investments. Today, we live in an era where the combination of advanced sensors, aerial platforms and human analytical capabilities allows us to observe the world with unprecedented precision and depth.

At BlackSquare we are an active part of that transformation.

Geospatial analytics is no longer just a technical tool; it has become a strategic layer for sectors that support the economy and global development. From mining to Oil & Gas, from civil engineering to agriculture and environmental projects, the ability to capture, interpret and model territorial data defines the quality of the decisions made.

Our team works with state-of-the-art technologies - LiDAR, hyperspectral sensors, magnetometry, gamma radiometry and ISR - integrated into UAV platforms, airborne, terrestrial systems and fixed configurations.

However, beyond the instrumentation, what really drives our work is the question that is always behind the data: what does this mean for the project, for the operation, for the future?

As in any technological transformation, the real differential is not only in the sensors or the equipment we use, but in the people who make them possible. Engineers, geoscientists, pilots and analysts work in an integrated way, combining experience in the field, technical rigor and a deep understanding of the operational environment of our clients.

Therefore, on behalf of Blacksquare let me tell you that we are very happy to present our portfolio of services in technical inspection, map generation, digital cartography and geospatial analysis.

Juan González Otero
CEO And Co-founder
BlackSquare



Sectors in which we work

- 01 Mining
- 02 Oil & Gas
- 03 Civil engineering and infrastructure
- 04 Environment and climate change
- 05 Agriculture

With technologies

Lidar

ISR

Magnetometer

VLF

Hyperespectral

Gamma Ray

Sector Mining

LiDAR

2D cartographic maps of the terrain
3D terrain modeling (DSM and DTM)
Calculation of volumes

HYPER

Maps of surface minerals
Environmental impact analysis of mining

MAG

Ferromagnetic mineral prospecting

VLF

Delineation of geological contacts, faults and fractured areas
Resistivity images for mapping of rock beds
Delineation of conductivity contrasts in depth
Aquifer and groundwater exploration

GAMMA

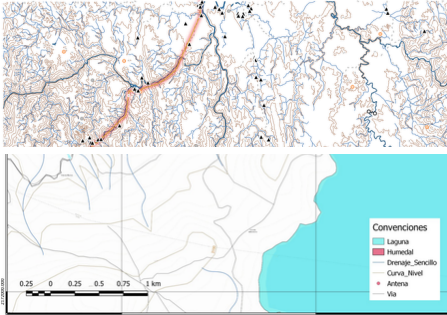
Uranium prospecting
Mineral prospecting by association with Th and K alteration

ISR

Perimeter security monitoring

2D cartographic maps of the terrain

(LIDAR)

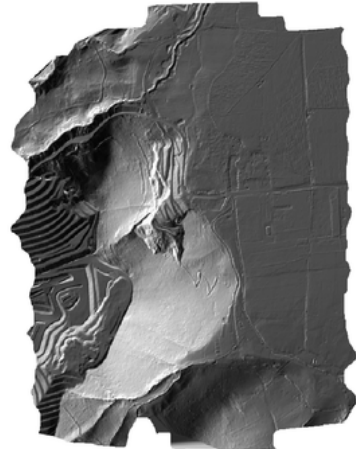


The flat representation of the Earth's surface shows elements such as terrain, rivers, roads, boundaries, and coordinates at a defined scale, allowing terrain analysis and supporting exploration planning, operational design, and georeferencing.

3D terrain modeling (DSM and DTM)

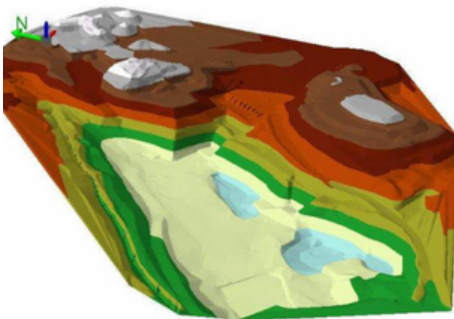
(LIDAR)

The three-dimensional representation of the Earth's surface can be presented as a DSM, which includes vegetation and structures, or as a DTM, which shows only the bare terrain. This type of model allows for the analysis of relief, slopes, and elevations, facilitating project planning, slope analysis, terrain stability assessment, mining infrastructure design, volume calculations, and the identification of critical areas for risk management.



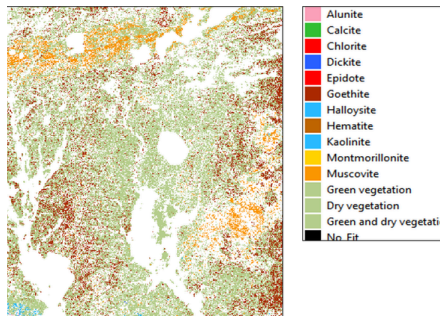
Calculation of volumes

(LIDAR)



The estimation of material volumes—whether cut, fill, waste, or ore—is carried out using terrain models and is a key tool for mine planning, production control, and cost management. It also enables precise volume calculations, planning of extraction activities, progress monitoring, and support for cost control throughout operations.

Maps of surface minerals



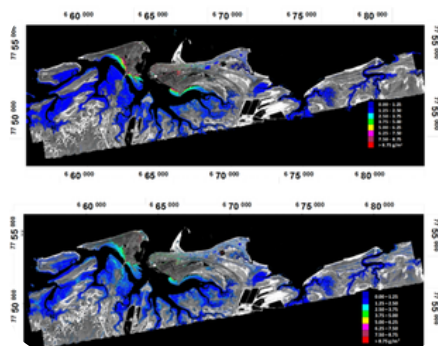
Spatial representations of the distribution of minerals exposed at the surface allow the identification of favorable zones, making them key tools for early-stage exploration. They also facilitate the prioritization of exploration areas, the optimization of sampling campaigns, and support decision-making during the initial phases of mining exploration.

(HIPER)

Environmental impact analysis of mining

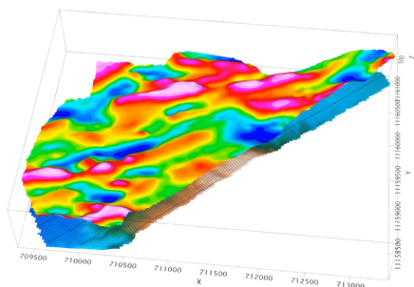
(HIPER)

The spatial assessment of the effects of mining activity on soil, water, vegetation, and the surrounding environment makes it possible to identify affected areas and analyze the impact generated by exploitation. It also facilitates the design of mitigation measures, the monitoring of mining impacts over time, and supports compliance with environmental regulations.



Ferromagnetic mineral prospecting

(MAG)

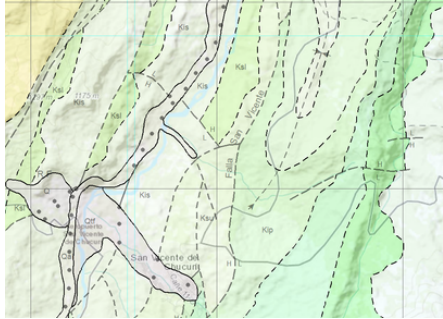


The identification of minerals with magnetic properties, such as magnetite, is carried out through the analysis of anomalies in the magnetic field, enabling the detection of buried mineral bodies and the recognition of associated geological structures. This type of study facilitates the identification of ferromagnetic bodies, the detection of magnetic anomalies, the delineation of geological structures, and the prioritization of exploration areas, while also supporting geophysical exploration activities.

Delineation of geological contacts, faults and fractured areas

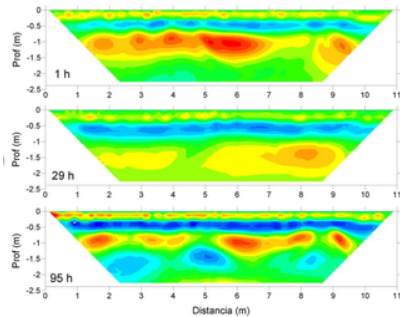
(VLF)

The identification of boundaries between geological units and tectonic structures allows for a better understanding of the deposit's geology and the analysis of ground conditions. This analysis facilitates the identification of geological contacts, the delineation of structural faults, and the recognition of fractured zones, while also contributing to terrain stability assessment and supporting the planning of exploration activities.



Resistivity images for mapping of rock beds

(VLF)

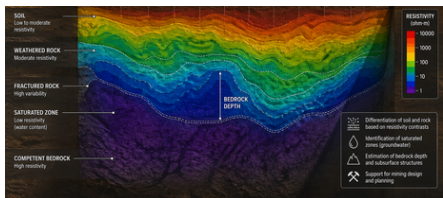


Las representaciones del subsuelo basadas en contrastes de resistividad eléctrica permiten diferenciar entre suelo y roca, así como identificar zonas saturadas y estimar la profundidad del lecho rocoso. Este tipo de análisis facilita la delimitación de estructuras del subsuelo y brinda soporte al diseño y la planificación de actividades mineras al proporcionar información clave sobre las condiciones geológicas del terreno.

Delineation of conductivity contrasts in depth

(VLF)

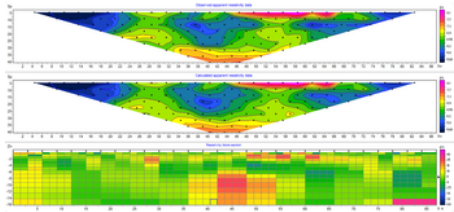
The analysis and delineation of variations in subsurface electrical conductivity allow for the identification of contrasts in ground properties and the recognition of geological structures at depth. This type of study is used to detect mineralized zones, delineate areas with mineralization potential, identify faults and geological discontinuities, and reveal the possible presence of subsurface fluids.



Aquifer and groundwater exploration

(VLF)

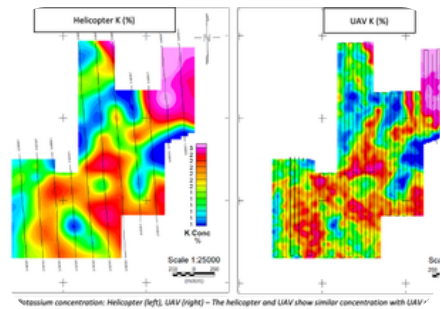
The identification and characterization of groundwater bodies through geophysical methods allows us to analyze the presence and behavior of water resources underground. This type of study facilitates the identification of aquifers, the characterization of groundwater and the evaluation of water availability, in addition to providing support for environmental management and the control of the impacts associated with mining activity.



Uranium prospecting

(GAMMA)

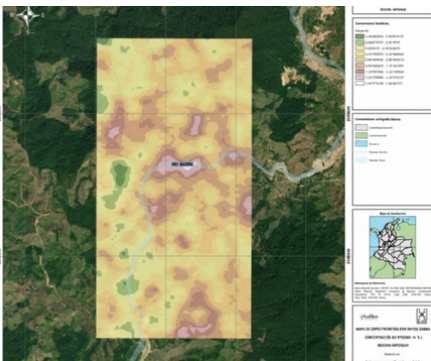
The detection of radiometric anomalies associated with the presence of uranium is used in mining exploration and in safety and radiological control studies. This type of analysis allows to identify radiometric anomalies and areas with possible presence of uranium, prioritize areas for exploration, as well as provide support to radiological safety studies and support radiological control and monitoring activities.



"Potassium concentration: Helicopter (left), UAV (right) - The helicopter and UAV show similar concentration with UAV"

Mineral prospecting by association with Th and K

(GAMMA)



The identification of areas of hydrothermal alteration through the analysis of thorium (Th) and potassium (K) concentrations allows us to recognize areas associated with magmatic or hydrothermal processes that may be linked to mineralized systems. This type of analysis facilitates the identification of alteration zones, the delimitation of hydrothermal systems and the prioritization of exploration targets, also providing support for mining exploration activities.

Perimeter security monitoring

(ISR)

The surveillance and control of mining areas through mapping and remote sensors allows continuous monitoring of the environment of operations to improve the security and management of the territory. This type of monitoring is used to prevent unauthorized access, protect critical infrastructure and strengthen operational security, also facilitating the monitoring of operational perimeters and the early detection of unauthorized access or activities in areas of interest.



Geospatial information for more accurate mining exploration and operation.



Sector Oil & Gas

LIDAR

2D cartographic maps of the terrain
3D terrain modeling (DSM and DTM)

HYPER

Direct detection of hydrocarbon macroseepage
Indirect detection of hydrocarbon microfiltrations
Detection and quantification of methane emissions
Analysis of the environmental impact of oil & gas exploitation

MAG

Ferromagnetic mineral prospecting

VLF

Delineation of geological contacts, faults, and fractured zones
Delineation of conductivity contrasts at depth
Resistivity imaging for bedrock mapping
Aquifer and groundwater exploration

GAMMA

Oil and gas prospecting for radiometric anomalies in the form of halos

ISR

Perimeter security monitoring
Monitoring of road right in pipelines

2D cartographic maps of the terrain

(LIDAR)

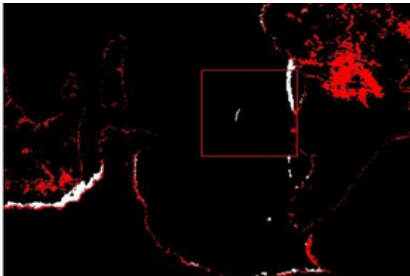


The flat representation of the earth's surface from above includes relief, contour lines, rivers, tracks, boundaries, coordinates and land uses, all at a defined scale. This cartography is essential to plan explorations, design pipelines, analyze reliefs and drainages, locate infrastructure and support operational georeferencing.

Direct detection of hydrocarbon macroseepage

(HIPER)

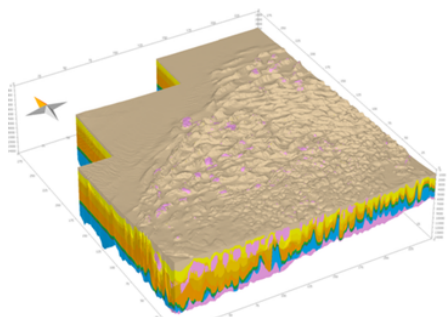
The identification of surface manifestations of hydrocarbons through geospatial analysis and remote sensors allows the detection of macrofiltrations and active seepage areas, facilitating the prioritization of prospective areas and the reduction of risk in the exploration stages.



3D terrain modeling (DSM and DTM)

(LIDAR)

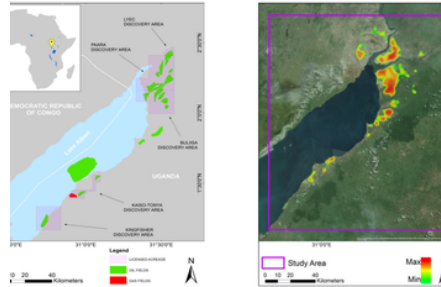
The three-dimensional representation of the earth's surface, using models such as the DSM (which includes vegetation and structures) and the DTM (which shows only the terrain), allows to analyze slopes, drainages and terrain conditions, supporting location planning, access design and infrastructure development.



Indirect detection of hydrocarbon microfiltrations

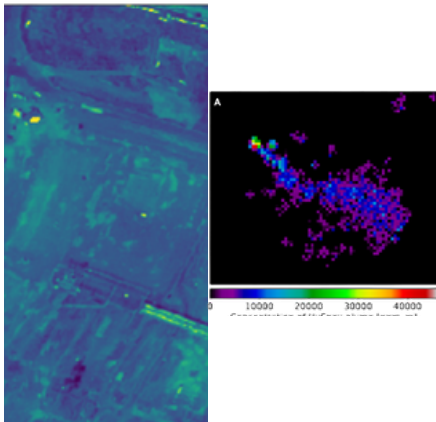
(HIPER)

The analysis of surface and subsoil anomalies associated with hydrocarbon microfiltrations allows to identify indirect geochemical signals related to the presence of hydrocarbons, facilitating the delimitation of areas with oil potential, the prioritization of exploratory prospects and the reduction of risk in the exploration stages.



Detection and quantification of methane emissions

(HIPER)



The monitoring and measurement of methane emissions in facilities, pipelines and operational areas makes it possible to identify leaks, quantify emissions and monitor the state of infrastructures, contributing to the assessment of environmental impacts, regulatory compliance and the development of mitigation strategies.

Analysis of the environmental impact of oil & gas exploitation

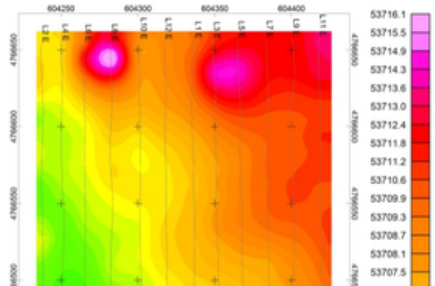
(HIPER)

The evaluation of environmental impacts derived from exploration and production activities through geospatial monitoring allows identifying areas affected by the operation and detecting alterations in the soil, vegetation and water bodies, including the detection of spills at sea and the analysis of water quality. In addition, it facilitates the spatial analysis of environmental impacts and provides support for mitigation plans and compliance with environmental regulations.



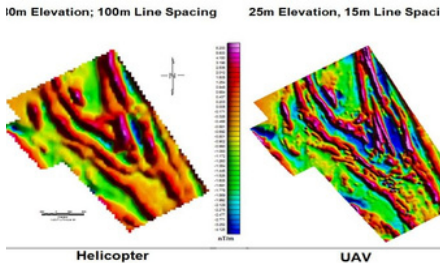
Ferromagnetic mineral prospecting

(MAG)



Delineation of geological contacts, faults and fractured areas

(VLF)

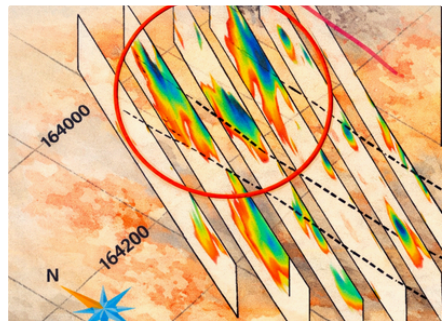


The identification of boundaries between geological units and tectonic structures allows a better understanding of the geology of the deposit and the conditions of the terrain. This analysis makes it easier to recognize geological contacts, delimit faults and fractured areas, as well as support the assessment of terrain stability and the planning of exploration activities.

Delineation of conductivity contrasts at depth

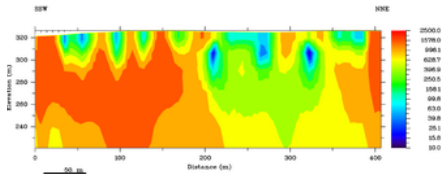
(VLF)

The analysis of variations in the electrical conductivity of the subsoil allows us to identify geophysical contrasts that help detect structures in depth, delimit geological faults and recognize the possible presence of fluids, providing support for geological interpretation in oil and gas projects.



Resistivity imaging for bedrock mapping

(VLF)

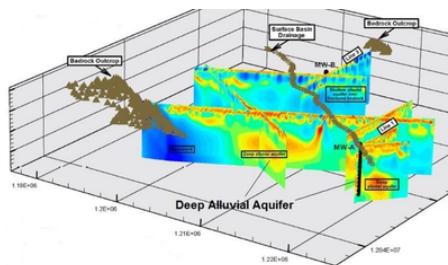


Representations of the subsoil based on electrical resistivity contrasts allow to differentiate between soil, rock and saturated areas, as well as to estimate the depth of the base. This type of analysis helps to understand the conditions of the subsoil and provides support for infrastructure design in oil and gas projects.

Aquifer and groundwater exploration

(VLF)

The identification and characterization of bodies of underground water using geophysical methods allows us to recognize aquifers, recharge zones and possible connections between deep units and shallow aquifers. This analysis is key to protecting water sources during drilling, assessing hydrocarbon contamination risks, insulating aquifers and reducing environmental and regulatory risks, in addition to supporting environmental licensing processes.



Prospecting for radiometric anomalies in the form of halos

(GAMMA)



The detection of radiometric anomalies associated with oil systems makes it possible to identify geochemical halos related to the vertical migration of hydrocarbons. This analysis facilitates the delimitation of prospective areas, the prioritization of exploratory targets and the reduction of risk in the early stages of exploration.

Monitoring of road right in pipelines

(ISR)

Continuous monitoring of pipeline corridors to detect intrusions, changes in the environment, geotechnical risks and environmental effects, improving safety and operational continuity.



Perimeter security monitoring

(ISR)



The surveillance and control of mining areas through mapping and remote sensors allows continuous perimeter monitoring, detecting intrusions in real time and identifying unauthorized access. In addition, it contributes to the protection of critical infrastructure and provides support for security and operational response.



Sector Civil engineering

LIDAR

2D cartographic maps of the terrain
3D terrain modeling (DSM and DTM)
Topographic surveys
Construction monitoring and progress tracking

HIPER

Asbestos roof maps

VLF

Inspection of buried metal objects (pipes, etc.)

ISR

Solar panel inspection
Inspection of punctual assets (torres, turbines, etc.)
Inspection of linear assets (power lines, communication lines, etc.)

2D cartographic maps of the terrain

(LIDAR)

A planar representation of the Earth's surface that displays terrain features such as contour lines, rivers, roads, and boundaries at a defined scale with geographic references, enabling terrain analysis and supporting exploration planning, operational design, and georeferencing.



3D terrain modeling (DSM and DTM)

(LIDAR)

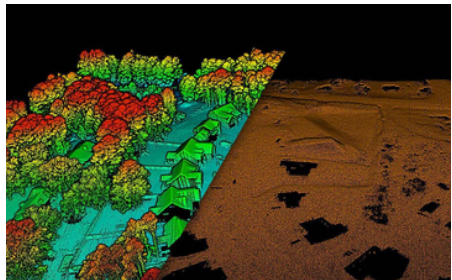


Three-dimensional modeling of the Earth's surface using DSM (including vegetation and structures) and DTM (bare earth) enables detailed analysis of slopes and elevations, supporting infrastructure design, cut-and-fill calculations, geotechnical risk assessment, and project planning and execution.

Topographic surveys

(LIDAR)

Precise capture of terrain geometry using LiDAR sensors provides detailed information on elevations, slopes, and landforms, enabling terrain analysis, infrastructure design and alignment, and earthworks volume calculations.



Construction monitoring and progress tracking

(LIDAR)

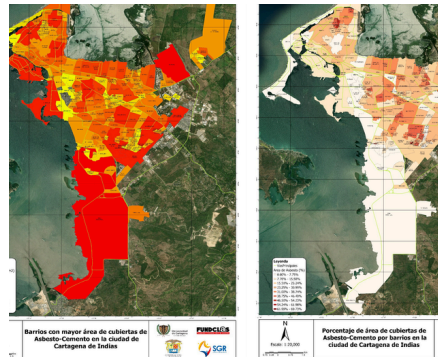


Continuous monitoring of construction projects through terrain model comparisons enables progress tracking, earthworks quantification, and design-to-as-built analysis. It facilitates the identification of deviations, monitoring of volumes and structures, and supports technical decision-making and schedule control.

Asbestos roof maps

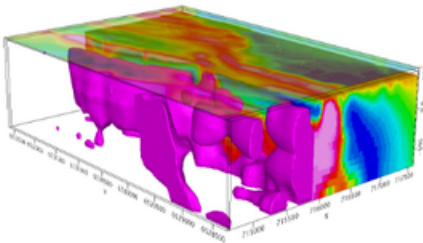
(HIPER)

The identification and delineation of asbestos-containing roofing through spectral analysis and geospatial data enables the detection and quantification of affected areas by construction typology. This information supports the prioritization of zones for intervention or removal, urban rehabilitation and renewal planning, and contributes to risk assessment for infrastructure, public health, and environmental compliance.



Inspection of buried metal objects (pipes, etc.)

(VLF)

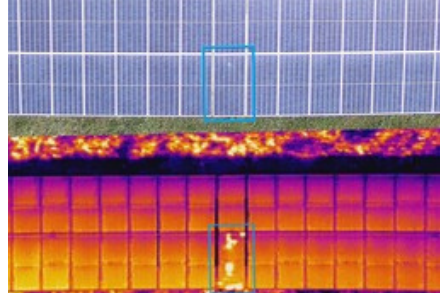


The detection and localization of underground metallic infrastructure using geophysical techniques enables precise identification of buried pipelines and the mapping of their alignment and continuity. It also facilitates the detection of undocumented crossings or interferences and helps reduce risks during excavation and civil works.

Solar panel inspection

(ISR)

The assessment of photovoltaic panels using optical and thermal sensors enables the detection of faults, efficiency losses, and overheating, supporting performance optimization and timely maintenance of solar installations.



Inspection of punctual assets (torres, turbines, etc.)

(ISR)



High-resolution aerial inspection enables detailed asset analysis, allowing the assessment of structural condition, detection of anomalies such as misalignments or overheating, and supporting maintenance planning.

Inspection of linear assets (power lines, etc.)

(ISR)



Monitoring of linear infrastructure (power lines, communication lines, etc.) over large areas enables the detection of structural faults, identification of vegetation encroachment, and assessment of right-of-way conditions, supporting preventive maintenance planning.

Sector Environment

LiDAR

- Forest inventory with species classification
- Carbon content mapping
- 2D cartographic maps of the terrain
- 3D terrain modeling (DSM and DTM)

HIPER

- Water quality map (turbidity, chlorophyll, etc.)
- Soil pyrogenic potential mapping

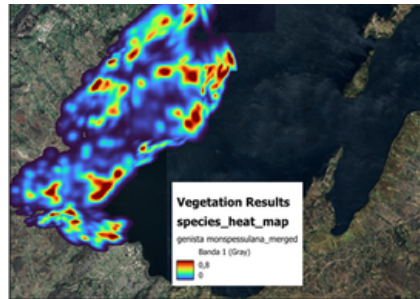
ISR

- Monitoring of extreme events (floods, fires, etc.)

Forest inventory with species classification

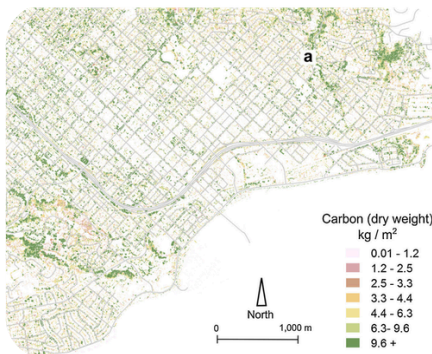
(LIDAR)

Forest cover characterization using LiDAR and hyperspectral sensors enables detailed analysis of forest structure and spatial distribution, supporting the identification, classification, and quantification of tree species.



Carbon content mapping

(LIDAR)

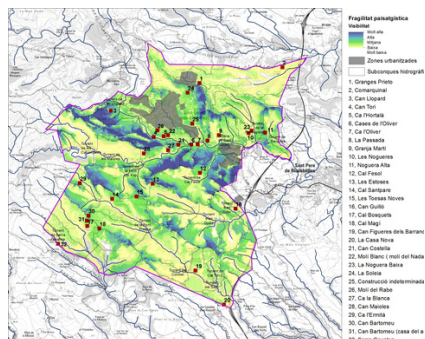


The estimation and mapping of carbon content in soils and vegetation through the integration of LiDAR and spectral data enables the identification of areas with high carbon sequestration potential. This information supports climate change and mitigation studies, underpins carbon offset and credit projects, and informs environmental management and restoration strategies.

2D cartographic maps of the terrain

(LIDAR)

The planar representation of the Earth's surface displays features such as terrain, contour lines, rivers, roads, and boundaries at a defined scale with geographic references, facilitating land analysis and supporting environmental management, ecosystem monitoring, and conservation and land-use planning.



3D terrain modeling (DSM and DTM)

(LIDAR)



The three-dimensional representation of the Earth's surface using DSM and DTM models enables the analysis of slopes, elevations, and landforms, supporting land assessment and environmental management and conservation planning.

Water quality map (turbidity, chlorophyll, etc.)

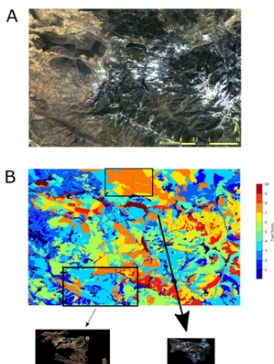
(HIPER)

Water quality assessment through spectral analysis enables the detection of variations in parameters such as turbidity and chlorophyll concentration, supporting water quality analysis and monitoring processes such as eutrophication and algal blooms. It also helps identify sources of pollution or sedimentation and assess environmental impacts in rivers, lakes, and wetlands.



Soil pyrogenic potential mapping

(HIPER)

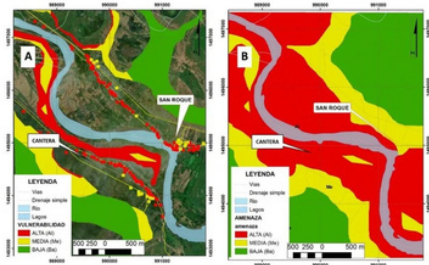


The identification of areas with high wildfire susceptibility through the analysis of soil properties and vegetation cover enables the recognition of zones with a high probability of ignition and fire spread. This information supports the prioritization of critical areas for prevention and forest management, strengthens early warning systems, and informs land-use planning, ecological restoration, and reforestation strategies.

Monitoring of extreme events (floods, fires, etc.)

(ISR)

Monitoring and analysis of extreme events (floods, wildfires, etc.) using near real-time remote sensing enables the delineation of affected areas, impact assessment, and supports early emergency response and decision-making.



Where natural systems meet geospatial technology



Sector

Agriculture

LiDAR

Forest inventory
Topographic surveys

HIPER

Disease maps
Nutrition maps (N,P,K)
Yield estimation maps

BLACKSQUARE

Forest inventory

(LIDAR)



La caracterización de áreas forestales y agroforestales con datos LiDAR permite analizar la cobertura y estructura vegetal para una mejor gestión del recurso forestal. Esto ayuda a identificar especies y densidad, evaluar la interacción entre cultivos y árboles, y apoyar el manejo agroforestal y silvopastoril, optimizando el uso del suelo y la productividad agrícola.

Topographic surveys

(LIDAR)

La captura precisa de la geometría del terreno mediante sensores LIDAR permite obtener información detallada sobre elevaciones, pendientes y formas del relieve, facilitando la delimitación de parcelas y áreas cultivables, el diseño de sistemas de riego y drenaje, la optimización del manejo del suelo y el apoyo a la planificación y mecanización agrícola.



Disease maps

(HIPER)



Dryopteris marginalis

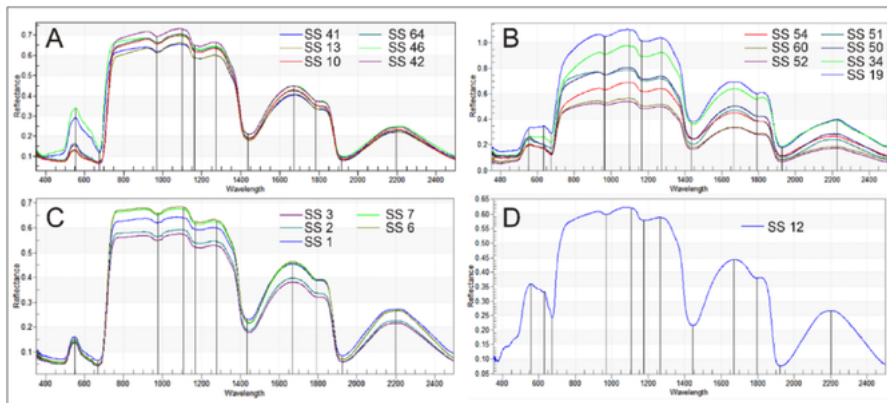
Nephrolepis exaltata

La identificación temprana de estrés vegetal y enfermedades mediante análisis hiperespectral permite detectar patrones invisibles al ojo humano y actuar oportunamente para reducir pérdidas productivas. Esta información facilita identificar afectaciones en los cultivos, delimitar zonas con riesgo sanitario y apoyar la aplicación focalizada de tratamientos para optimizar costos y manejo agrícola.

Nutrition maps (N,P,K)

(HIPER)

El análisis de la variabilidad nutricional de los cultivos mediante información espectral permite identificar deficiencias o excesos de nutrientes y comprender la heterogeneidad del cultivo. Esta información facilita delimitar zonas de fertilización diferenciada, optimizar el uso de fertilizantes e insumos y mejorar el rendimiento y la eficiencia productiva.



Yield estimation maps

(HIPER)

Los modelos predictivos de rendimiento agrícola basados en datos remotos permiten estimar la producción y analizar la variabilidad productiva del cultivo, identificando zonas de alto y bajo desempeño. Esta información facilita optimizar la planificación de cosechas y apoyar decisiones de manejo orientadas a mejorar la eficiencia y la rentabilidad agrícola.





Our Team
guarantees
precision and
technical support

BLACKSQUARE

Case Study

Remote sensing for:



**Universidad
de Cartagena**
Fundada en 1827

Measurement area: 10.000 ha

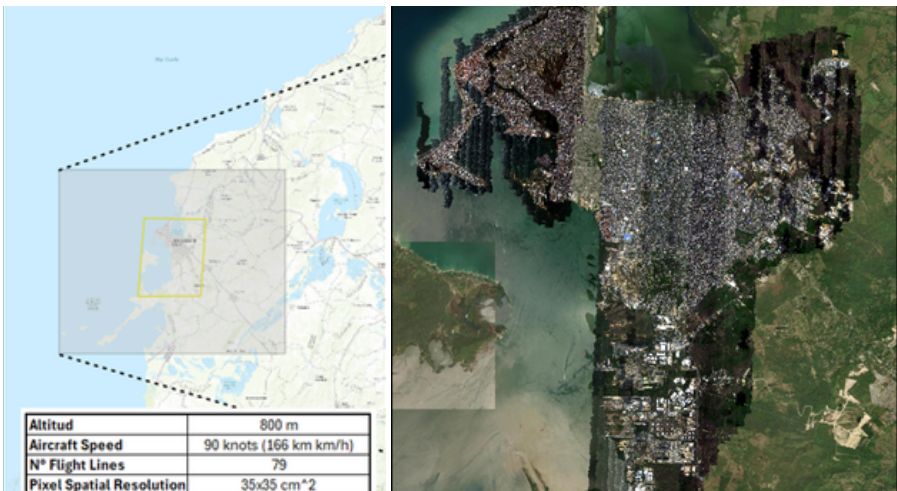
Location, Cartagena (Colombia)

Asbestos ceiling detective

Asbestos is known for being a group of natural minerals that form heat-resistant fibers and many chemicals, so it has been used for the construction of buildings, houses, schools, roofs, among other products. Since the mid-twentieth century, asbestos has been studied for being the cause of different lung diseases such as lung cancer, so it has been banned in many European countries. Today Colombia is part of that list of countries that have said NO to this material, this through the 1968 Law of 2019, also known as the Ana Cecilia Niño Law.

BlackSquare was hired by the University of Cartagena, in the context of a project of the General Royalty System, to fly over the entire city of Cartagena, in an aircraft equipped with HySpex hyperspectral sensors and Riegl lidar sensors.

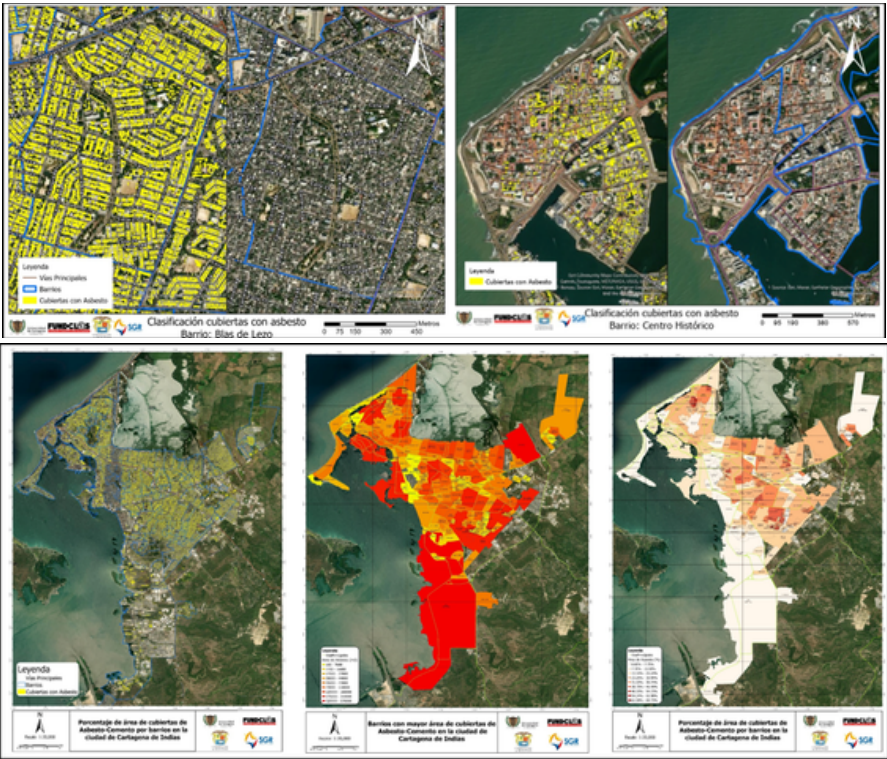
This project marks the first time that the fusion of hyperspectral data and LiDAR is implemented at the city level in Latin America.



Results

Multiple areas were identified where roofing materials contain asbestos, revealing a public health concern.

Beyond the maps delivered, this project turns information into action: a solid foundation for prioritizing interventions, designing policies, and protecting the population.



Remote sensing for:



Measurement area: 35,000 ha

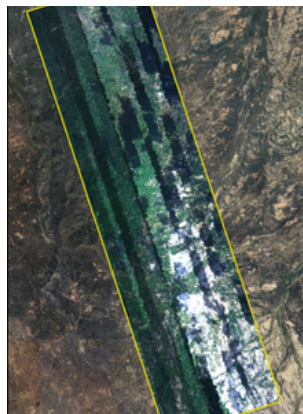
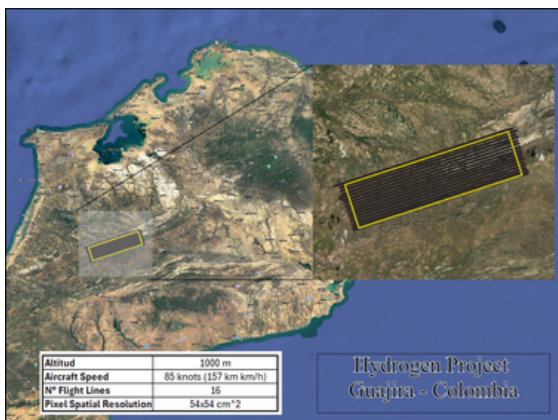
La Guajira (Colombia)

White Hydrogen Exploration

White hydrogen, also known as natural hydrogen, has begun to position itself as one of the most promising energy sources in the transition toward cleaner and more sustainable systems. Unlike industrially produced hydrogen, it occurs naturally in the subsurface, significantly reducing its carbon footprint and the costs associated with its extraction. Its potential to generate energy with no direct emissions makes it a strategic resource in the global context of decarbonization.

Colombia is promoting new energy sources such as white hydrogen and geothermal energy to diversify its energy matrix and move toward a more sustainable model.

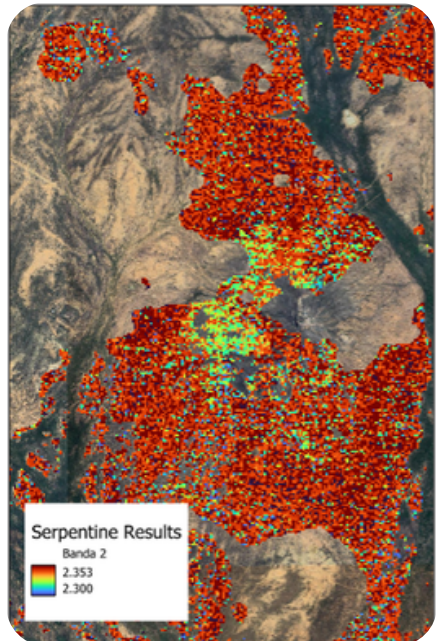
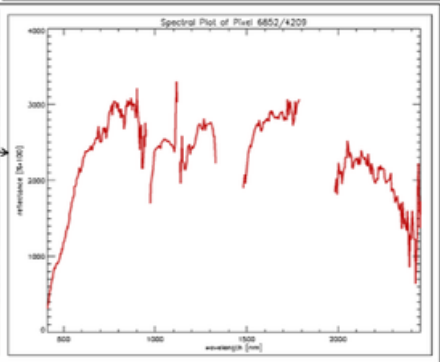
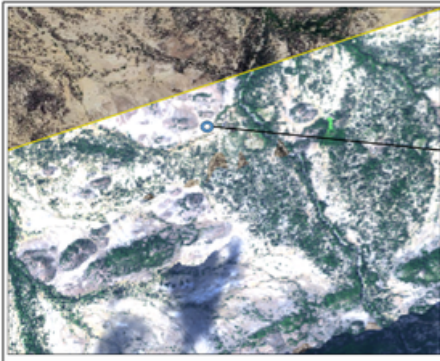
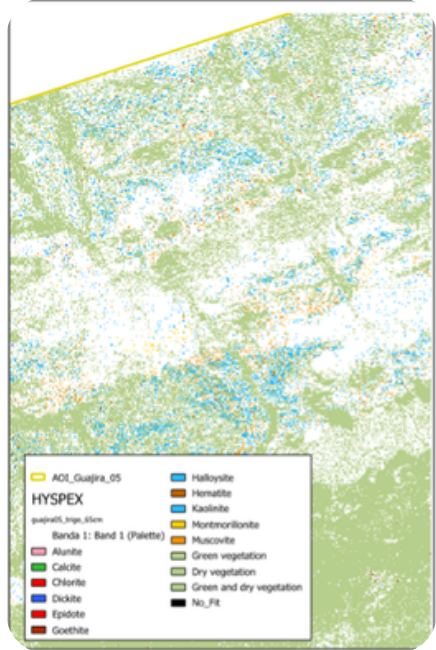
The exploration of geothermal sources has gained relevance as a renewable alternative capable of providing constant energy with low environmental impact. The convergence of these two lines of development reflects a commitment to innovative solutions that strengthen the country's energy security and promote a more sustainable long-term model.



Results

We identified the presence of mineralogical associations consistent with geological environments favorable for the generation and accumulation of white hydrogen.

In particular, the detection of serpentinites and related minerals suggests the occurrence of serpentinization processes, known for their ability to naturally produce hydrogen in the subsurface.



Remote sensing for:



MINERA SAN CRISTÓBAL S.A.

Measurement area: 65,000 ha

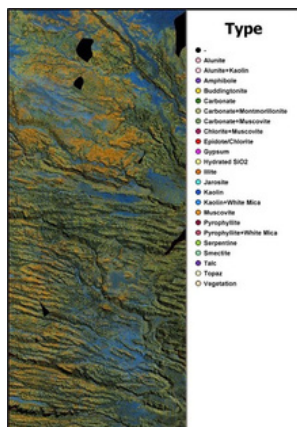
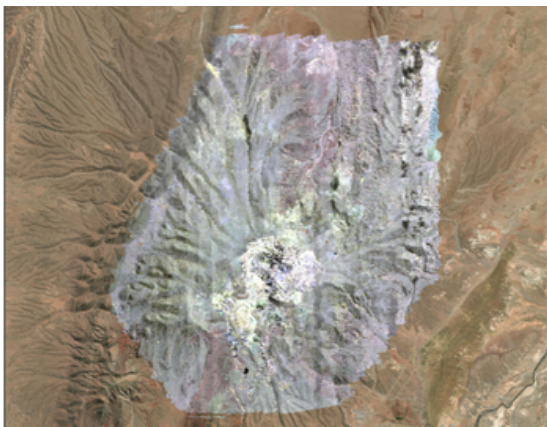
Potosi (Bolivia)

Mineral Exploration for San Cristobal Mining

The mineralization is dominated by disseminated and vein-type sulfides rich in silver, zinc, and lead, associated with hydrothermal processes that generated intense alterations such as silicification, argillization, and alunitization. These characteristics reflect the interaction of metal-rich hot fluids with the host rocks, giving rise to one of the most important polymetallic deposits in the Andean region.

Geologically, the deposit corresponds to a high-sulfidation epithermal system developed in Miocene volcanic rocks, mainly tuffs and dacitic domes.

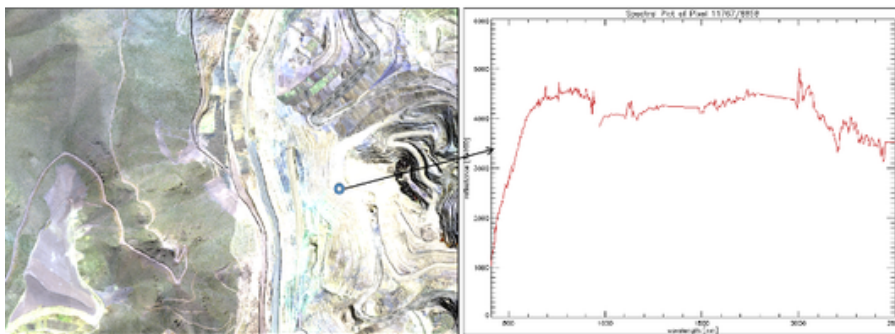
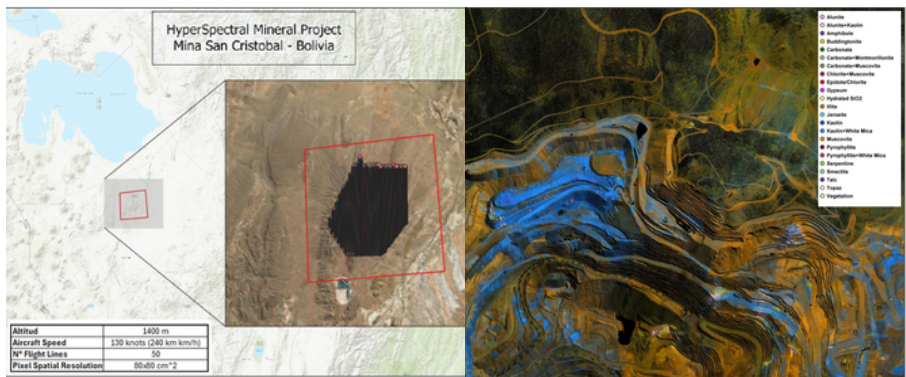
The results of the hyperspectral analysis in the San Cristóbal Mine area revealed a clear distribution of minerals associated with high-sulfidation hydrothermal systems.



Results

It was possible to distinguish the presence of minerals such as alunite, kaolinite, and amorphous silica, which are key indicators of advanced argillic alteration and silicification processes.

These findings made it possible to delineate zones with different intensities of alteration, providing a more detailed view of the deposit's mineralogical zonation.



Remote sensing for:



Uptc[®]

Universidad Pedagógica y
Tecnológica de Colombia

Measurement area: 5,000 ha

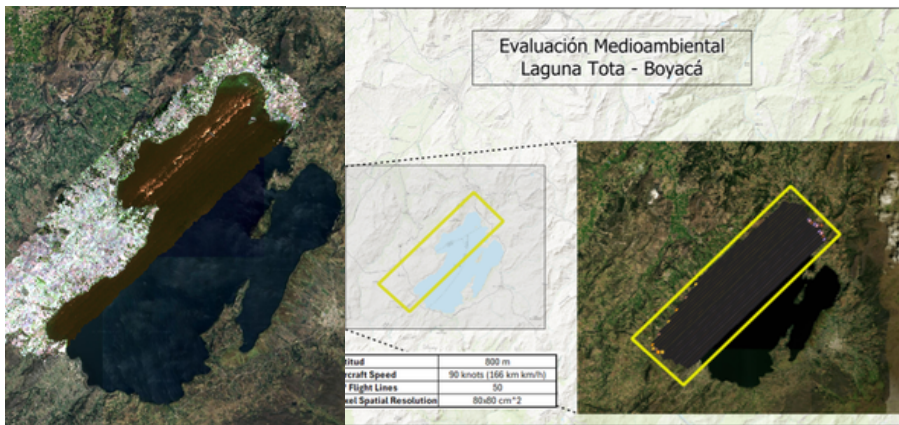
Lago de Tota (Colombia)

Environmental Assessment

The HidroAves Tota project is developed within the area of influence of Lake Tota, one of the most important freshwater bodies in Colombia due to its ecological, hydrological, and socioeconomic value. Located in the department of Boyacá, this lake is a strategic ecosystem that hosts a high diversity of birdlife, including resident, migratory, and some conservation-priority species.

The project's approach integrates biological monitoring, hydrological analysis, and environmental assessment to strengthen the conservation of habitats associated with the lake and promote responsible use of water resources. In this way, HidroAves Tota is positioned as a key tool for decision-making in environmental planning and biodiversity protection in the region.

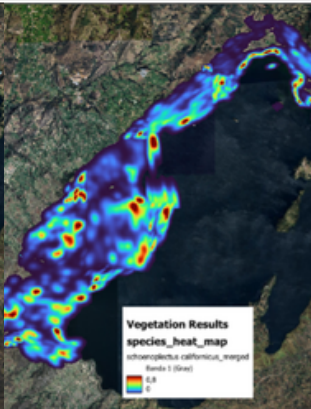
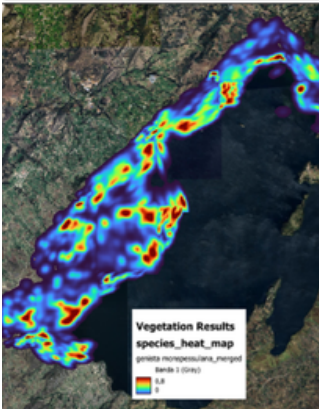
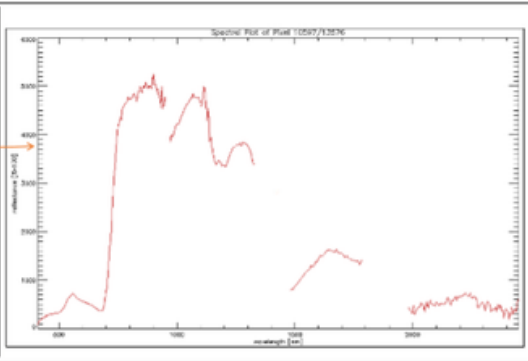
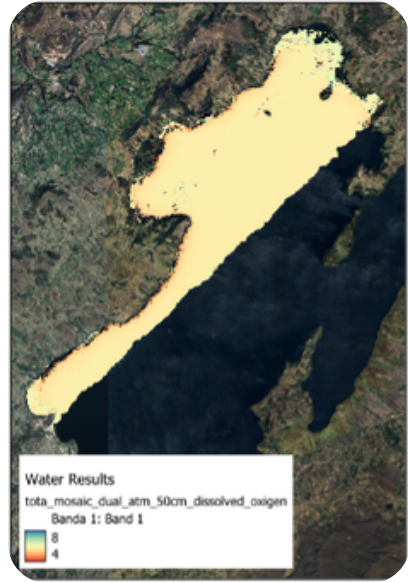
Hyperspectral technology enabled the precise identification and delineation of areas of influence associated with different types of vegetation.



Results

The results demonstrate the capability of hyperspectral technology to generate spatially continuous, high-resolution information, contributing to the understanding of the system's limnological dynamics.

The results obtained demonstrate the potential of hyperspectral remote sensing as a tool for integrated environmental monitoring.



We have worked for



BLACKSQUARE





✉ juan.gonzalez@blacksquare.com.co

🌐 blacksquare.com.co

☎ +57 3182503390

📱 @blacksquaresas

📍 Cra 22 #88 - 16 Bogotá, Colombia

